

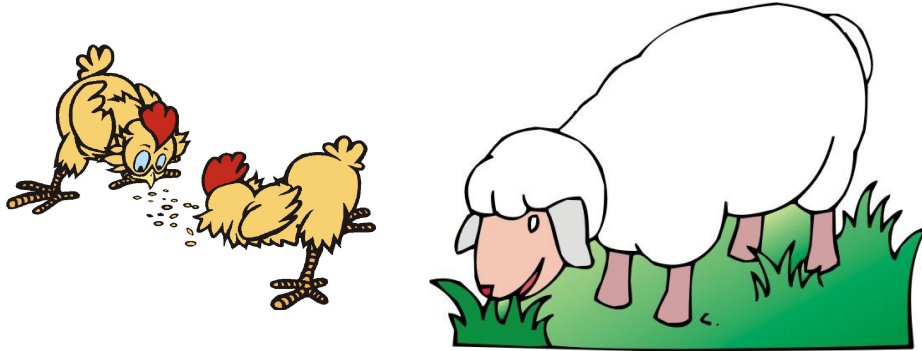


Problem of the Week

Problem A

Chicken and Sheep, Heads and Feet

Samantha has chickens and sheep on her farm. Each chicken has two legs and each sheep has four legs. Each chicken has one head and each sheep has one head. She looked out one day and counted 48 animal heads and 134 legs. How many of each animal live on the farm?



STRANDS NUMBER SENSE AND NUMERATION, NUMBER SENSE AND NUMERATION

